

PERSONAL LOCKERS

388 SERIES



LOC-6536C2-24 &
LOC-6536C6-24 x 3
shown in Winter Wood

Features

- Comprehensive selection of personal storage lockers in a variety of configurations & sizes
- Commercial grade, durable construction designed to withstand high traffic environments
- Units come standard with lock & leveling glides
- Extensive range of laminate finish & handle choices to complement any space
- Ideal for any personal or shared workspace where storage or security is required
- Add-on options including digital lock, number plates & venting are available
- Units may be ganged together
- Ships fully assembled
- Made in Canada



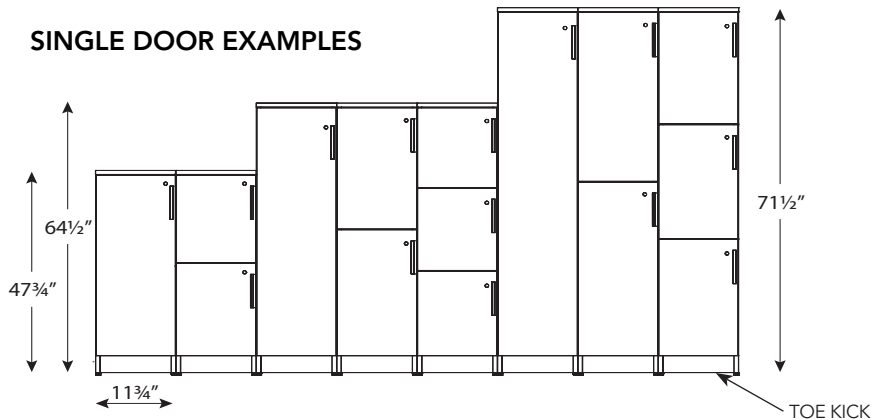
www.heartwood.ca

 **Heartwood**[®]
manufacturing ltd  office furniture

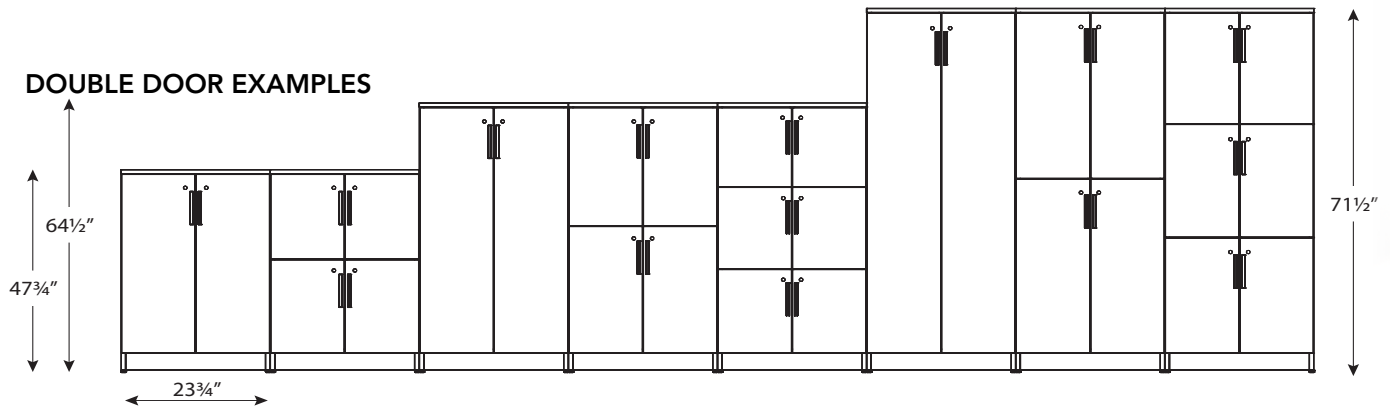
Sizing

- Single door or double door configurations
- Standard heights are 48", 65" and 72"
- Single door standard widths are 12" & 18"
- Double door standard widths are 24" & 36"
- Standard depths are 18" & 24"
- Custom sizes are available, contact Customer Service with your custom design

SINGLE DOOR EXAMPLES

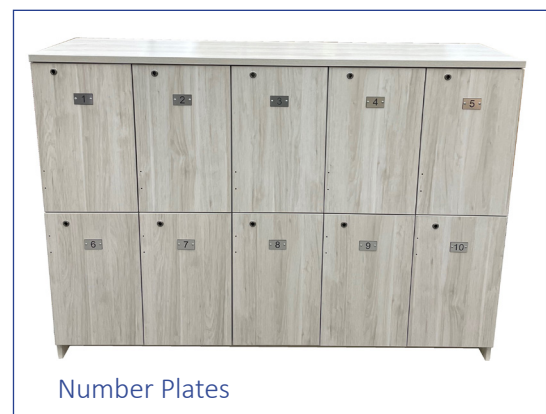


DOUBLE DOOR EXAMPLES



Add-on Options

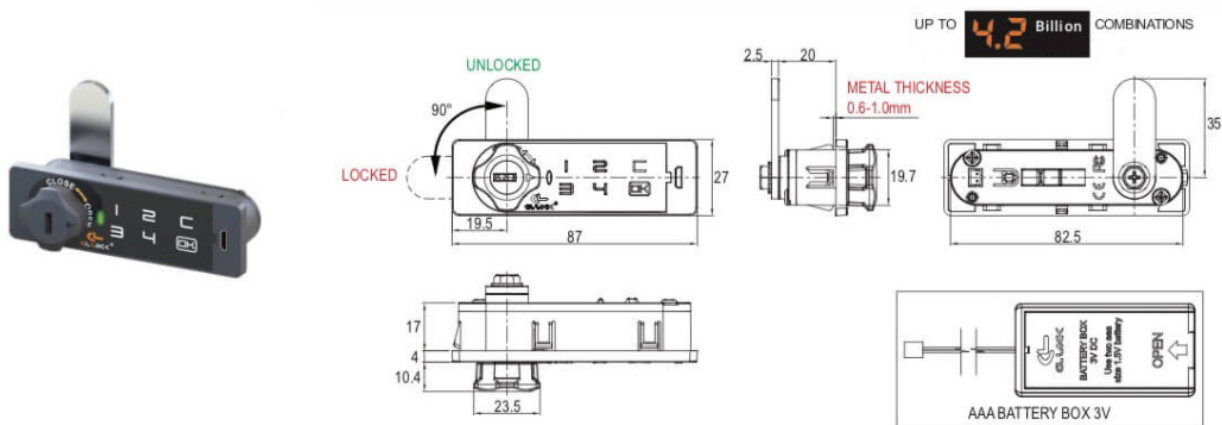
- Locker Vent - located in the back
- Number Plate
- Coat Hooks - 1 per gable / divider
- Boot Shelf
- Hat Shelf
- Gang Hardware
- Electronic Locks



Number Plates

- Upcharges for add-ons are applied per cubby & per unit
- Hand & Boot shelf options are available for 1 door high, single door or double door units Contact customer service unique requests

- An electronic lock (similar to a hotel safe lock and similar functionality) is a MULTI user programable lock



LOC-6518CLH2-18 x 3
LEV-3060TBL-SOX2
388-1320MSO-22
FS1-1560PLX
shown in Golden Ash & Pure White



LOC-6536C2-24 &
LOC-6536C6-24 x 3
TEM-2448GSC-48-2S
with 100-AKTM-2
shown in Grey Dusk & Grey

Available Finishes



Heartwood Manufacturing Ltd.

Choose flexibility and excellence, with Canadian-made case good furniture that’s customizable and **Made-to-FIT.**

Contact your local dealer:

PRINTED IN CANADA

251 ADAMS RD, KELOWNA, BC V1X 7R1
T 1 800 567 3060 F 250 765 1213
WWW.HEARTWOOD.CA

✓ Limited **LIFETIME** Warranty

Heartwood is pleased to offer a limited lifetime warranty on all laminate products. For specific series warranty details, please refer to the downloadable Limited Lifetime Warranty document online.



✓ **Made in CANADA**

Heartwood is proudly Canadian. Located in beautiful Kelowna, British Columbia, Heartwood is committed to the highest standards of furniture manufacturing and employee safety.



✓ **ECO** Story

Heartwood is committed to supplying office furniture products in an environmentally responsible manner. We are proud to partner with like-minded corporate citizens who align environmental stewardship with their company’s core values and goals.

