

LAMINATE FINISHES



Autumn Maple
AM



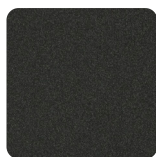
Black
BL (Base Only)



Black Walnut
BW



Cappuccino
Dream
CD
(textured finish)



Charcoal Matrix
CM



Desert Sand
DE



Driftwood Grey
DD
standard smooth finish
- only available in 1"
material



Driftwood Grey
DW
textured finish - only
available in ¾" and
1½" material



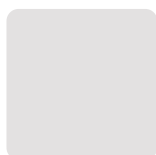
Evening Zen
EZ



Golden Ash
GA



Graphite
GT (Base Only)



Grey
GR



Grey Dusk
GD



Grey Matrix
GM



Hardrock Maple
HM



Noce Cocoa
NC
(slight textured finish)



Pure White
PW



Royal Mahogany
RM



Seaside White
SW



Sugar Maple
SM



Volcanic Ash
VA
(slight textured finish)



Winter Wood
WW



White Board
WB
available in ¾" material
-writeable/wipeable

TACKBOARD FABRICS



Storm
HW153



Mercury
HW094



Midnight
HW009



Gold
HW210



Burgundy
HW212



Mica
HW214



Hemp
HW216



Citrine
HW218



Flamingo
HW220



Indigo
HW222



Turquoise
HW224

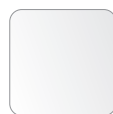


Stone
HW226

PLEXI



Clear (CR)



Frosted (FR)



Bronze (BR)

NOTE: As it is not possible to print exact colour matches and textures 100% accurately, the colours shown are representative only and may vary from the actual product colours.

Colour selection is current at time of print.
Refer online for updated details.

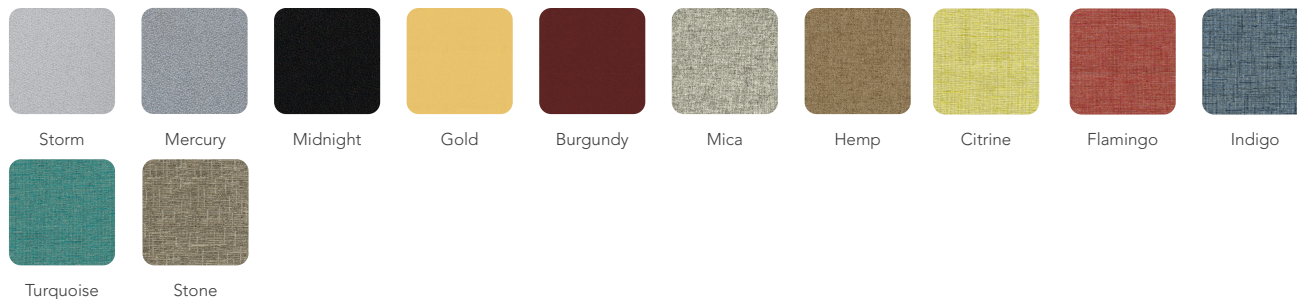
Heartwood Manufacturing Ltd.
251 Adams Rd, Kelowna, BC V1X 7R1
T 1 800 567 3060
F 250 765 1213

www.heartwood.ca

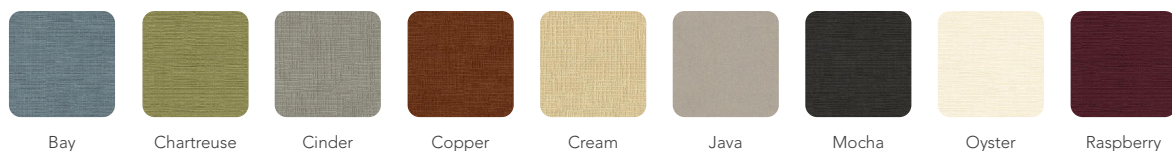
FINISHES AND FABRICS

PEDESTAL FABRICS

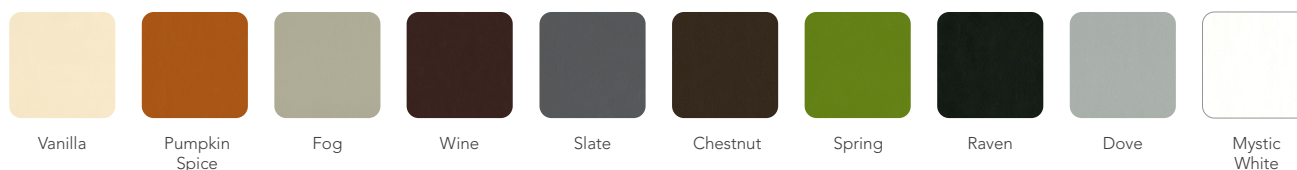
ESCAPE



HEAVENLY



ULTRALEATHER



HANDLES



Arched

Black



Double Arched

Black / Nickel



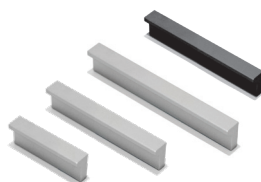
Step

Champagne (2 sizes)



Fluted

Black or Champagne



Bar

Aluminum (3 sizes)
Black (1 size)



Bridge

Aluminum



Scoop

Aluminum (2 sizes)



Scoop

Black (2 sizes)



ECO STORY

Heartwood and HDL are committed to supplying office furniture products in an environmentally responsible manner. We are proud to partner with like-minded corporate citizens who align environmental stewardship with their company's core values and goals.

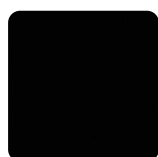
HIGH-PRESSURE LAMINATE FINISHES

NOTE: High-Pressure finishes are approximations and not **exact** matches to Heartwood Manufacturing finishes. For more detailed finish information, please see the manufacturer's swatch (code provided).

For custom High-Pressure pressure matches or alternate choices, contact Customer Service for a quote cs@heartwood.ca



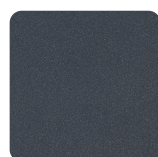
Autumn Maple
AM-HP
Formica 758



Black
BL-HP
(Base Only)
Formica 909



Black Walnut
BW-HP
Formica 6402



Charcoal Matrix
CM-HP
Formica 515



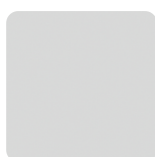
Desert Sand
DE-HP
Heartwood
Proprietary



Driftwood Grey
DD-HP
Heartwood
Proprietary



Graphite
GT-HP
(Base Only)
Formica 912



Grey
GR-HP
Formica 927



Grey Matrix
GM-HP
Formica 507



Grey Dusk
GD-HP
Heartwood
Proprietary



Hardrock Maple
HM-HP
Formica 756



Noce Cocoa
NC-HP
Arborite 460



Pure White
PW-HP
Formica 459



Royal Mahogany
RM-HP
Pionite WY351



Seaside White
SW-HP
Formica 9285



Sugar Maple
SM-HP
Formica 7288



Volcanic Ash
VA-HP
Arborite W479



Winter Wood
WW-HP
Formica 8841

PREMIUM HIGH-PRESSURE LAMINATE FINISHES



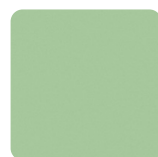
Clementine
CO-HP
Formica 2962



Spectrum Red
SD-HP
Formica 845



Chrome Yellow
CW-HP
Formica 1485



Light Green
LG-HP
Formica 8794



Spectrum Blue
SB-HP
Formica 851



Weathered
Beamwood
WD-HP
Formica 6410